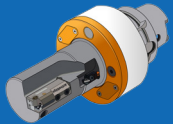


ActiveEdge

ActiveEdge

The ActiveEdge Tool



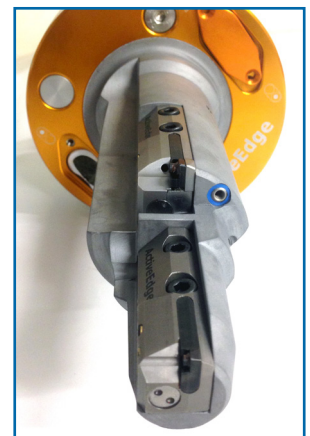
ActiveEdge Boring tools use **wireless technology** to remotely adjust up to **seven cutting edges** on a single tool with **micron accuracy**...

Tool Summary

The ActiveEdge tool is a custom designed boring bar with the capability to adjust its cutting edges with micron accuracy using wireless transmission.

This cartridge-based solution allows up to **seven ActiveEdge cartridges** to be mounted on a **single tool**. ActiveEdge cartridges are user replaceable.

ActiveEdge tools enable multiple critical diameters to be machined simultaneously, significantly **reducing cycle time** and **increasing process efficiency**.



ActiveEdge Component Diagram

