

## Recharging

The adjuster recharging kit (SB-CHR07) contains a range of interchangeable AC adaptors.

It is essential that the instructions for use described in the safety leaflet supplied with the recharger are followed.

The Smartbore Adjuster can only be recharged with SB-CHR07.

To recharge the adjuster:

- 1) Insert the d.c. power plug into the adjuster recharge port.
- 2) Plug in or switch on the recharger unit
- 3) The adjuster is fully charged when the recharger displays a constant green indicator light.
- 4) It takes approximately 2 hours for a completely empty unit to recharge.

## Important Information

- a) Do not leave the charger connected to an adjuster for longer than 24 hours.
- b) It is not possible to use the adjuster while it is charging.
- c) In the unlikely event that the adjuster does not automatically switch off after an adjustment session, the unit can be switched off by inserting the recharger plug in to the recharge socket. The unit will operate normally again when the plug is removed.
- d) The adjuster contains delicate electronic components and should be handled with care.
- e) It should not be subjected to shock loads or immersed in liquids.
- f) It should be stored in a clean, dry place when not in use.



### Rigibore Ltd

Guildford Road Industrial Estate, Hayle,  
Cornwall. TR27 4QZ. United Kingdom

Phone: +44 (0)1736 755355

Email: [info@rigibore.com](mailto:info@rigibore.com)

---

### Rigibore Inc

700 Swan Drive, Mukwonago, WI53149, USA

Phone: +1 262 363 3922

Email: [info@rigiboreinc.com](mailto:info@rigiboreinc.com)

---

### Rigibore India Private Ltd

4/1 Brindavan, Millers Road,  
Bengaluru (Bangalore), 560052, India

Phone: +9180 4125 3035

Email: [info@rigibore-india.com](mailto:info@rigibore-india.com)

---

[www.rigibore.com](http://www.rigibore.com)

QMS - ISO 9001: 2015



## Operating Instructions & Technical Information

### Smartbore Adjuster SB-ADJ187



**Smartbore**  
Micron accurate cutting edge tool adjuster

European Patent:EP1758710 USA Patent: 8,028,435

## Set-up menu

The **MENU** and **SEL** buttons are used to access the set-up menu:-

### Adjustment Measurement (mm/in)

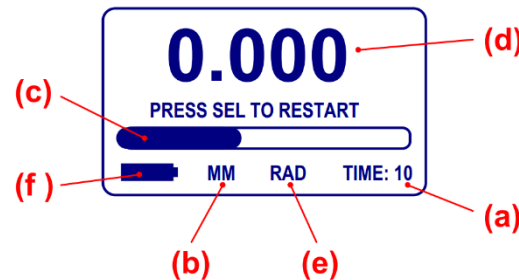
1. Press the ON button to activate the adjuster.
2. Press the MENU button twice and MM will be displayed.
3. Press the SEL button to change to INCHES.
4. Press the MENU button to save and move to the next option (Radius/Diameter)

Follow the above procedure to also change between radius / diameter and move to the next option boring/overturning.

The following options will appear when repeatedly pressing the menu buttons:

- **SHUTDOWN** – press SEL to turn the adjuster off.
- **METRIC/INCH** – press SEL to change the measurement between mms and inches. Press MENU to save.
- **RADIUS/DIAMETER** – press SEL to switch between diameter or on radius. Press MENU to save.
- **BORING/OVERTURNING** – selecting OVERTURNING inverts the adjustment indicator so that a clockwise handle turn displays a decreasing measurement. Press MENU to save.
- **PART NO** – press SEL to view the part number and the software version.
- Press MENU once to exit the set-up menu.

## Smartbore Adjuster Main Screen



- a) The adjuster will switch off automatically if it is not inserted into a tool. When the adjuster is activated a thirty second **timeout** begins. When the adjuster is withdrawn, the timeout is set to 10 seconds.
- b) **Measurement** – MM or INCH.
- c) **Adjustment range bar** provides a graphical representation of the current adjustment position within the physical adjustment range of the Smartbore cartridge or boring head.
- d) **Adjustment indicator** displays the precise change in the position of the cutting edge as the unit is adjusted, relative to the initial start position.
- e) **Adjustment type** – RADIUS OR DIAMETER.
- f) **Battery indicator** – when this show only one bar or is flashing, the adjuster needs charging.

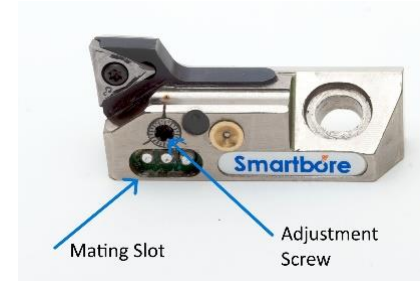
### NOTE:

**A warning message is displayed if the cartridge is accidentally adjusted beyond the 0.6mm (on diameter) adjustment range.**

## Operating Instructions

### Making an adjustment

1. Press the **ON** button. The screen will display **PLUG INTO CARTRIDGE**.
2. Ensuring that the cartridge or boring head is free of coolant and metal particles push the adjuster nose into the mating slot.



3. Push the adjuster rear handle until the Torx™ head is securely located in the cartridge adjustment screw. A three second **WAIT** period begins after which the adjuster is operational.
4. Adjustments are made by turning the handle and are shown on the display in increments of one micron ( $\mu\text{m}$  /  $1/1000^{\text{th}}$  mm) or the imperial equivalent.
5. Remove the adjuster once the adjustment has been made. The display shows **UNPLUGGED** and a ten second countdown starts after which the adjuster will switch off. The final adjustment reading will be displayed during this time.
6. Press **SEL** to reset the adjuster while **UNPLUGGED** is displayed on the screen. You can now adjust another cartridge or boring head.